

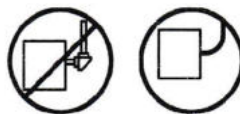
Exit Sign Emergency Light User Manual

READ ALL WARNINGS AND INSTRUCTIONS BEFORE INSTALLING THIS
PRODUCT TO ENSURE SAFETY AND PROPER OPERATION, KEEP THIS
MANUAL GUIDE FOR FUTURE REFERENCE.

1. CAUTION

1. preview the diagram thoroughly before beginning.
2. All electrical connections must be in accordance with local codes, ordinances, and the National Electric Code.
3. Disconnect power at fuse or circuit breaker before installing or servicing.
4. Do not use outdoors.
5. Do not mount in hazardous locations, or near gas or electric heaters.
6. Do not let power cords touch the hot surface.
7. Equipment should be mounted in locations and heights where it will not be subjected to tampering by unauthorized personnel.
8. The use of accessory equipment which is not recommended by the manufacturer may cause an unsafe condition.
9. Do not use this equipment for other than intended use.
10. All serving should be performed by a qualified personnel only.
11. Allow the battery to charge for 24 hours before first use, for 2 batteries model, need 48 hours fully charge batteries.

Use Flexible Conduit Only



2. WIRING DIAGRAM (FIG. 1)

AC WIRING

Connect the J-box wires to the power supply wires using the wire nuts provided.

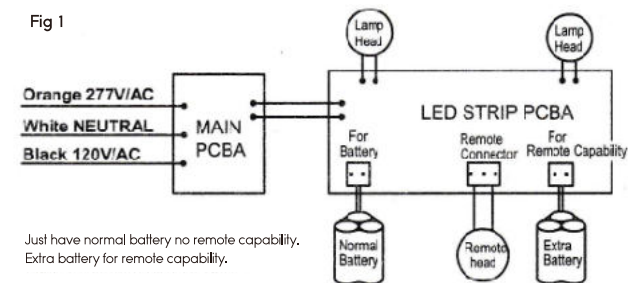
Connect the white wire to neutral.

If using 120V, connect the black wire to the hot lead.

If using 277V, connect the orange wire to the hot lead.

Cap the unused lead.

Fig 1



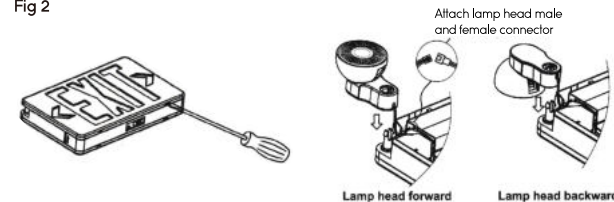
Just have normal battery no remote capability.
Extra battery for remote capability.

3. INSTALLATION

ASSEMBLY LAMP HEADS (FIG. 2)

1. Open front cover with a flat screwdriver.
2. Snap lamp head on the 2 corners of the frame. If the unit is ceiling mount or side mount, lamp head can assemble backward.
3. Attach 2 pcs lamp heads male and female connector together.

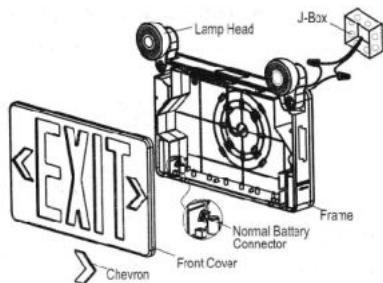
Fig 2



WALL MOUNTING (FIG. 3)

1. Open the front cover and assemble 2 pcs lamp heads on the frame.
2. Knock out the center and appropriate mounting screw holes on the back plate.
3. Route the proper wire through the center hole out of the housing.
4. Make electrical connections inside the J0 box as the wiring diagram.
5. Push excess wire into J-box, use screws tighten unit to J-box.
6. Snap chevron to EXIT panel if required.
7. Attach battery connector to PC board, restore front panel on the unit, adjust the position of lamp head as per need.

Fig 3



SIDE/CEILING MOUNTING (FIG. 4&5)

1. Attach crossbar to J-box, set the crossbar so that the longer blade is touching the J-box.
2. Open the front cover and assemble 2 pcs lamp heads on the frame.
3. If double face is desired, replace back plate with additional face plate provided.
4. Remove out the mounting hole cover on the top or side of the unit, assemble the canopy (Fig. 6).
5. Route the proper wires through mounting hole out of the housing.
6. Make electrical connections inside the J-box as the wiring diagram.
7. Push excess wire into J-box, use screws tighten canopy to crossbar so that canopy is securely fastened and tight against the wall.
8. Snap chevron to EXIT panel is required.

9. Attach battery connector to PC board, restore front panel on the unit, adjust the position of lamp heads as need.

Fig 4

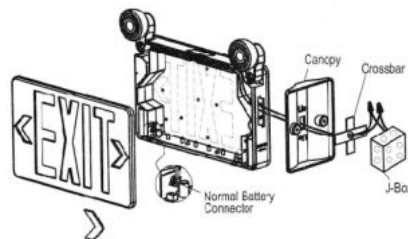


Fig 5

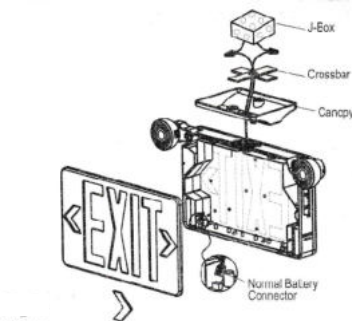


Fig 6

Canopy assembly



Insert canopy into housing at 20 degree angle and twist.
Quick snap is now locked firmly.
Caution: Trying to remove canopy after it is locked in place may cause damage.

CONNECTING REMOTE HEADS (FIG. 7)

Using a normal battery, no remote capability.

Use extra battery with remote capability.

Connect remote heads extension wire to remote wire, yellow is positive (+), purple is negative (-). Connect wires using wire nuts.

Fig 7

